

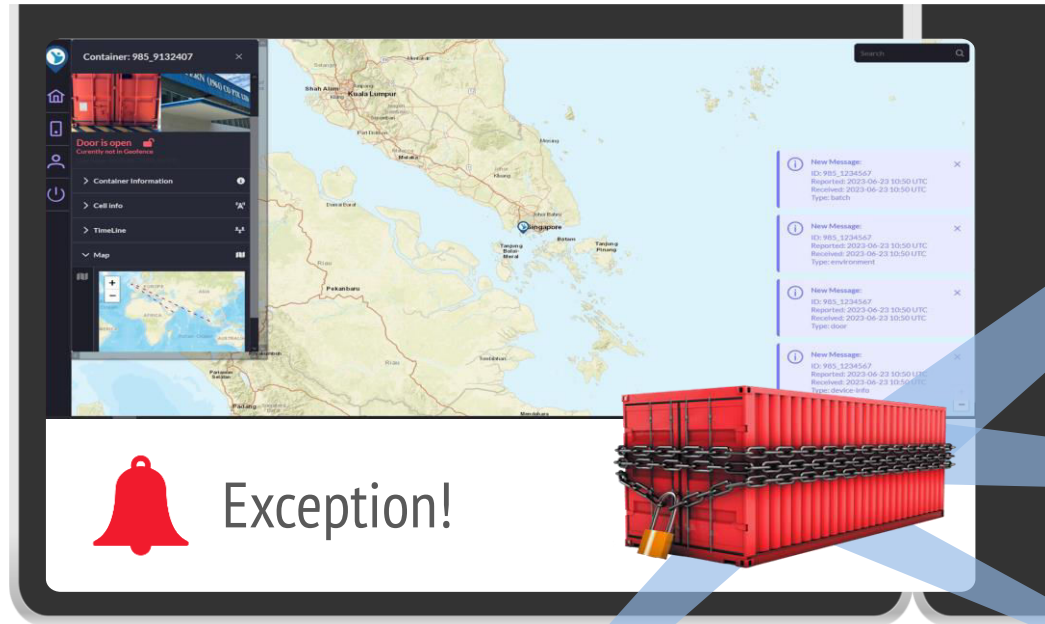


# Lighting Up the Container with the Introduction of Pervasive Security

Ian Walter, CEO Net Feasa



# Security & Visibility Everywhere



Container: 985\_9132407

Door is open  
Currently not in Gearbox

Container Information

Cell Info

TimeLine

Map

Exception!

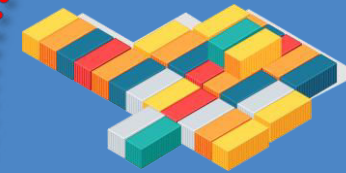
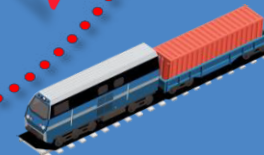
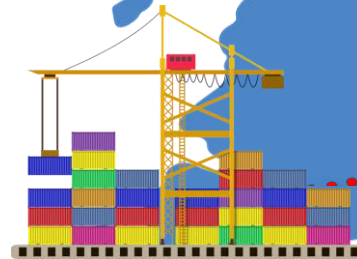
New Message  
ID: 985\_1234567  
Reported: 2023-06-23 10:50 UTC  
Received: 2023-06-23 10:50 UTC  
Type: switch

New Message  
ID: 985\_1234567  
Reported: 2023-06-23 10:50 UTC  
Received: 2023-06-23 10:50 UTC  
Type: environment

New Message  
ID: 985\_1234567  
Reported: 2023-06-23 10:50 UTC  
Received: 2023-06-23 10:50 UTC  
Type: door

New Message  
ID: 985\_1234567  
Reported: 2023-06-23 10:50 UTC  
Received: 2023-06-23 10:50 UTC  
Type: shock alert

The screenshot shows a mobile application interface for container tracking. It features a map of Southeast Asia with a red container icon. A sidebar on the left contains navigation options like 'Door is open', 'Container Information', 'Cell Info', 'TimeLine', and 'Map'. A central panel displays a list of 'New Message' notifications with details such as ID, timestamp, and type. Below the map, a red container is shown with a padlock and the word 'Exception!' next to a bell icon.



# IoT PASS

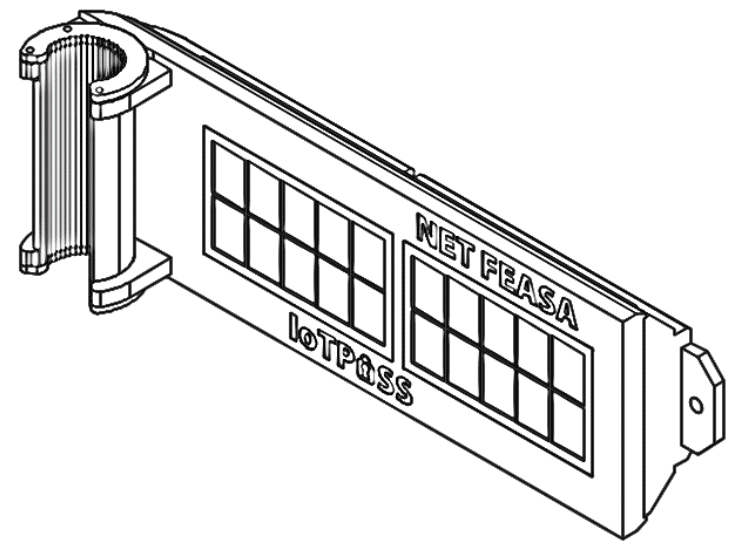
SNAP, SPIN - SECURE



Mechanical Door Sensor  
Snaps on to Locking Bar



Global Coverage  
5G NTN Satellite Fallback



Energy Harvesting  
Battery Autonomy



Rapid Installation  
Single Fixing Point

# Snap, Spin, Secure



Permanent install  
with a single fixing  
point

Or

Single Trip secured  
with magnets

# Global Coverage

Combining our patented door open/close detection system with 5G Mobile Satellite (NTN) - Providing the only solution on the market that will detect security anomalies anywhere in world.

## Patent Pending - Security & Anomaly Detection

Using the rotation of the locking bar to detect door open events & being able to send those events to the cloud via terrestrial, satellite or vessel networks from alerting abnormal door open events.



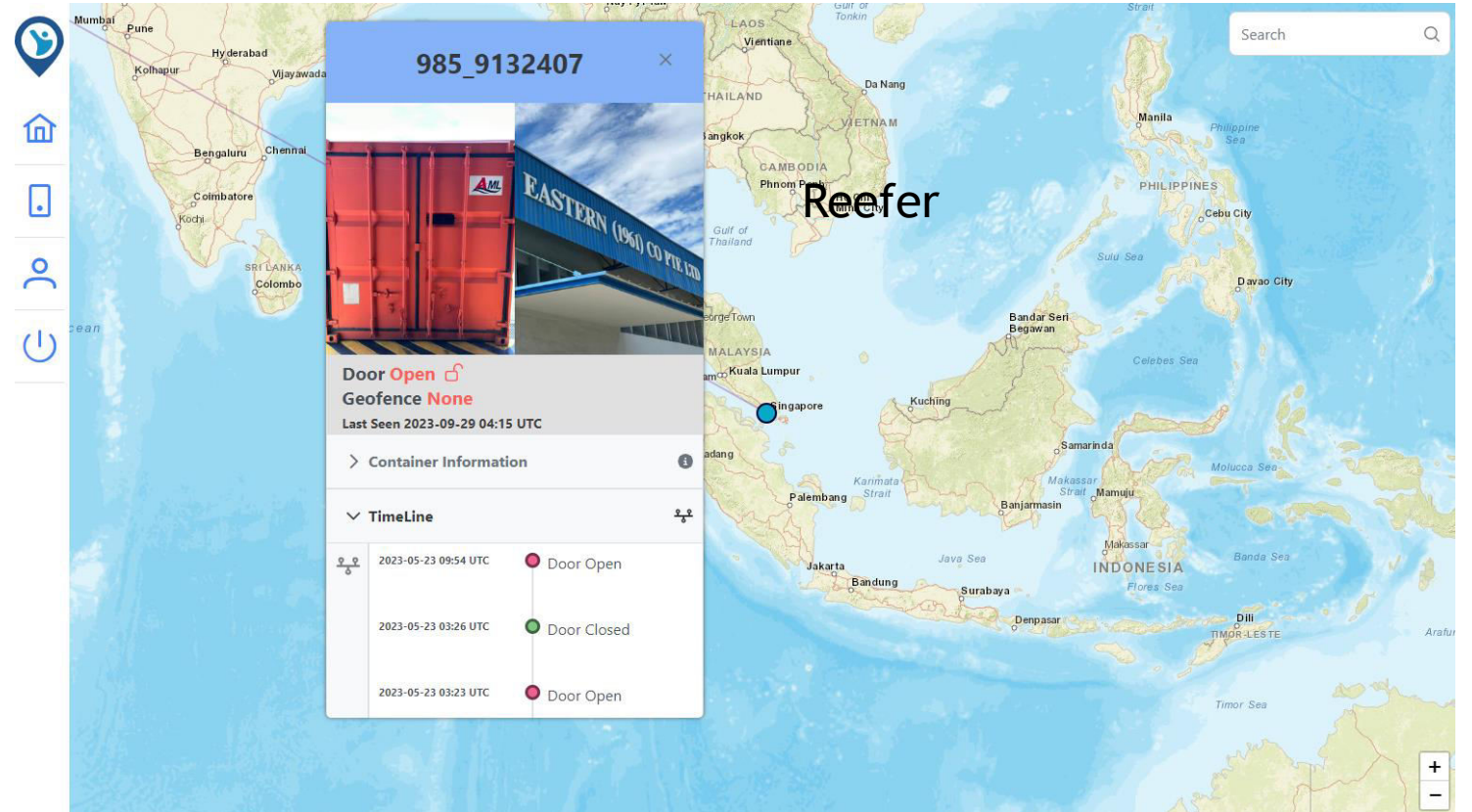
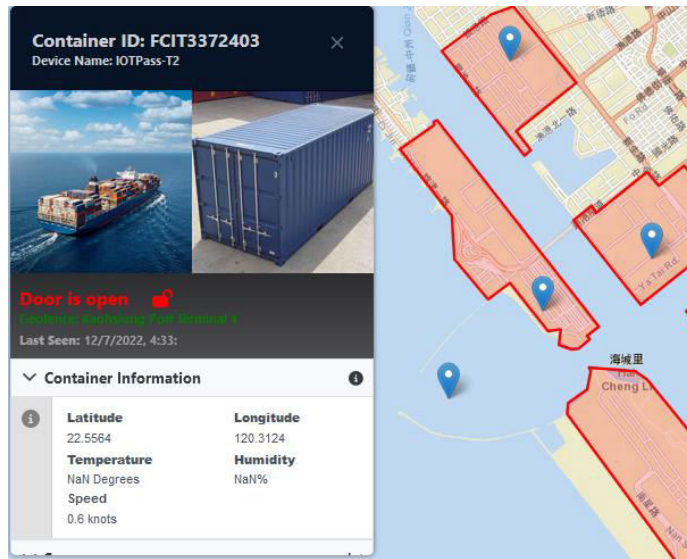
## IoT Roaming - Multi SIM Technology with 5G NTN Satellite Fallback

Addresses the current lack of NB-IoT and LTE CAT-M roaming agreements without the need to use GSM.

# Visualisation Platform

IoT PASS can be configured to work with the visibility platform of your choice:

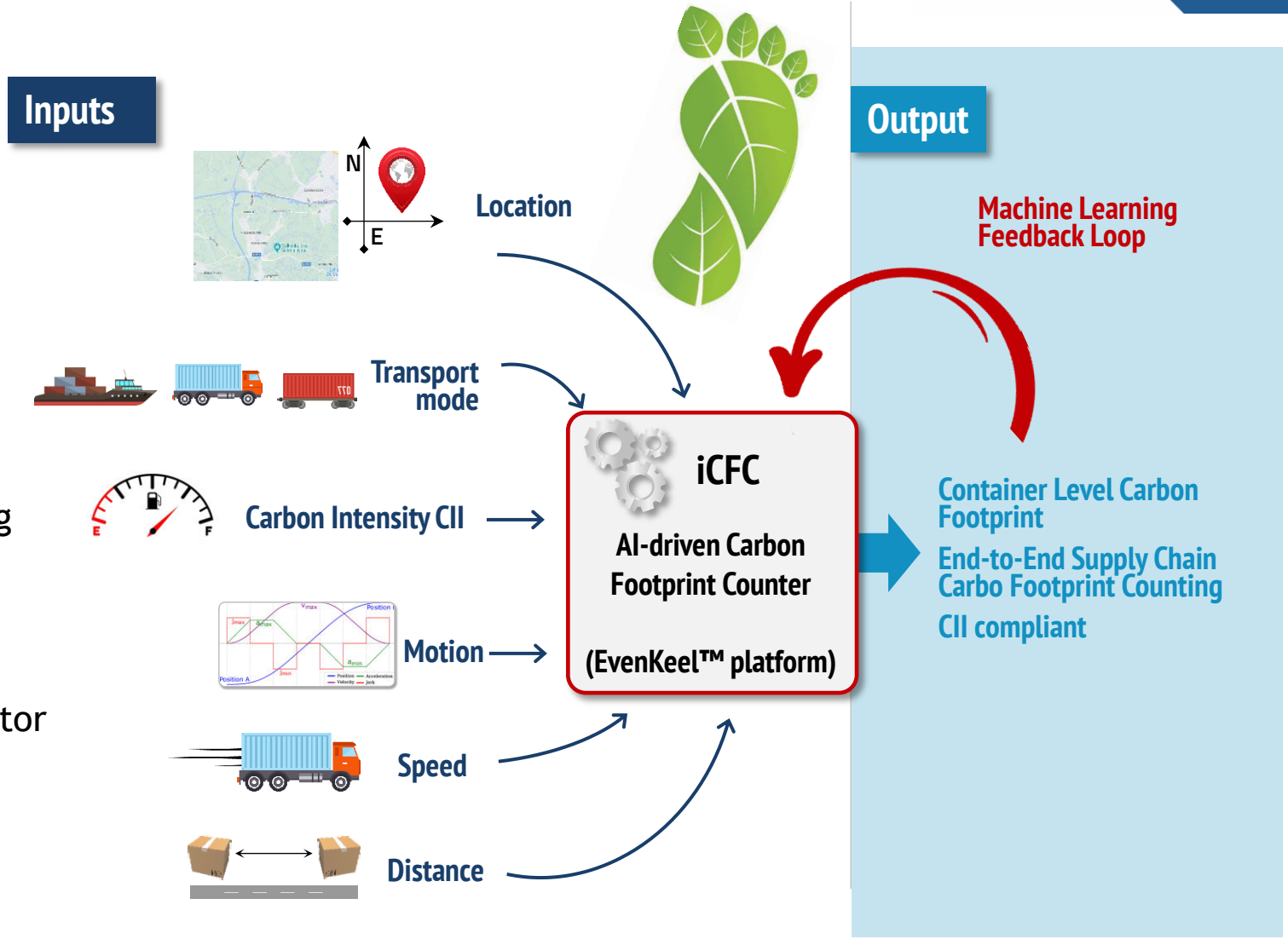
- EvenKeel
- Shipping Line Platform
- 3<sup>rd</sup> Party Visibility Platforms
- Integrate with existing applications
- Other Cloud/On Vessel Platforms



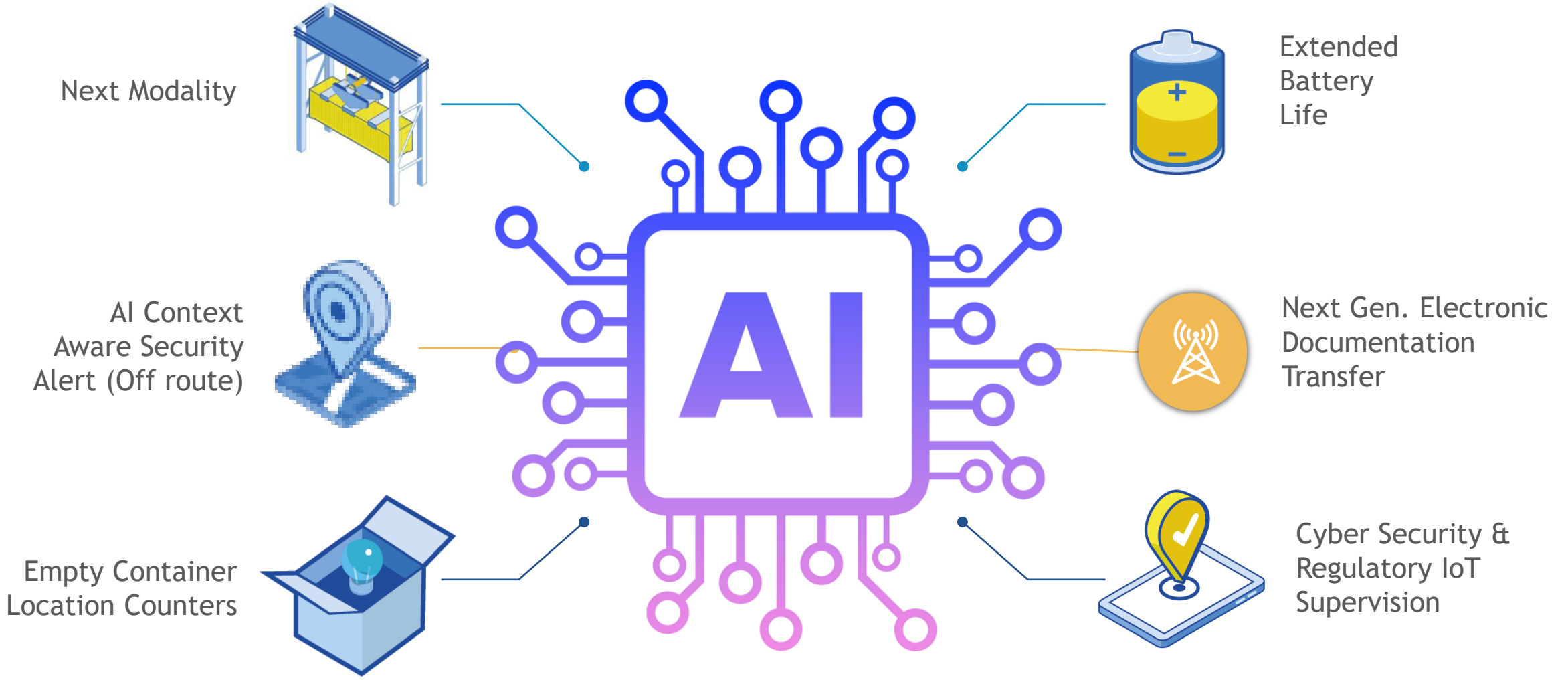
# Carbon Footprint Analytics & Reporting

## IoT PASS™ Ensures Clarity & Accuracy in the Calculation and Reporting of Carbon Emissions

- Per trip, Per segment, Container level and End-to-End Supply Chain Reporting
- IoT Data is fed into our AI-driven Intelligent Carbon Footprint Counter (iCFC) engine.
- CII compliant Carbon Footprint Calculator in EvenKeel™.
- Provides insights for operational and investment decision making



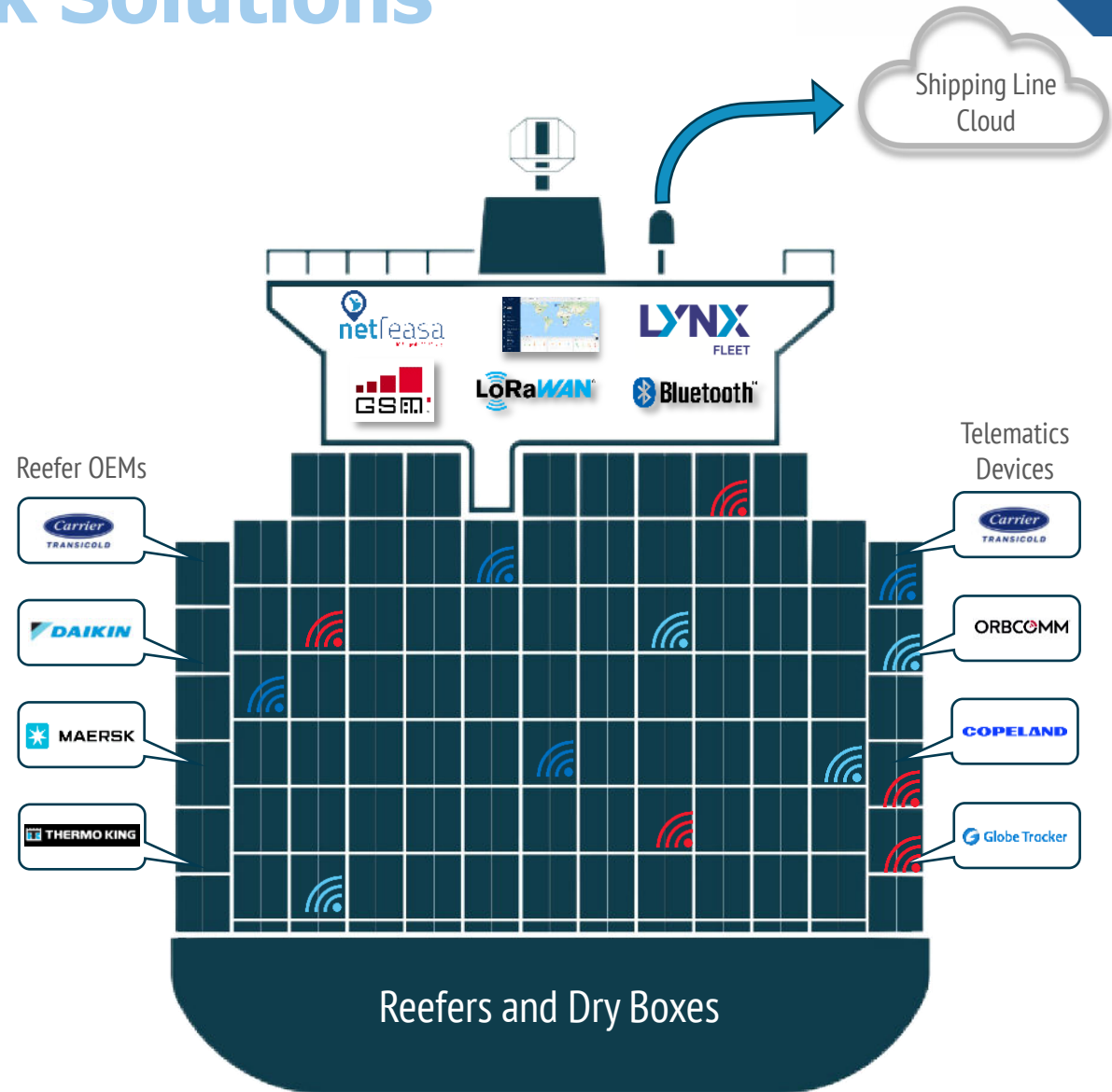
# Other Key Features





# Wireless Vessel Network Solutions

- Solution currently supports Cellular and LoRA telematics devices
- Supports all reefer OEMs
- Supports telematics devices from Carrier, Orbcomm, GlobeTracker, Copeland
- Supports Dry Container monitoring
- Support for future vessel IoT use cases





netfeasa

Intelligent Connectivity

Thank You