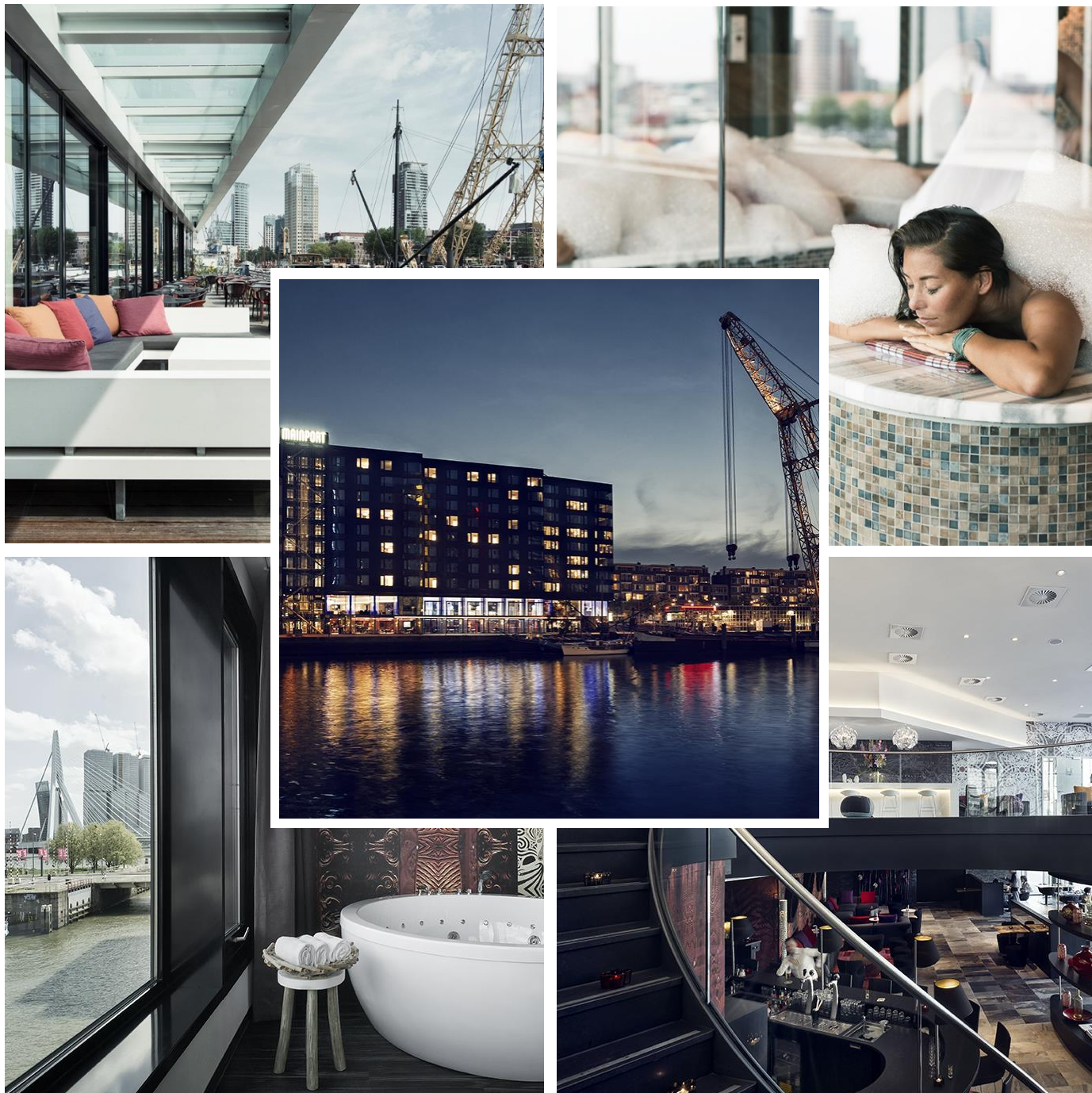


INTERMODAL EUROPE 2018

VIP HOTEL GUIDE



MAINPORT BY INNTEL HOTELS

- This five-star Design hotel is located in a unique spot along the river Maas near the Erasmus Bridge
- Rotterdam's highlights in addition to the water taxi, tram, metro and city center are all within walking distance from the Mainport Hotel.
- There is a free Wi-Fi service throughout the hotel.
- Achieve total relaxation after a long workday at the Wellness Spa Heaven with a swimming pool, Finnish panorama sauna, Turkish steam bath, two treatment rooms and Life Fitness Gym.
- Indulge in a luxury lifestyle of cocktails on quay level Cocktail Bar: On the Rocks.

The Mainport Hotel is easily accessible by public transport. From **Rotterdam Central Station**, there are several trams and one metro that travel directly to **Leuvehaven**. Both the metro and tram stop immediately outside the front of the hotel.

Distance from the AHOY, Rotterdam: 6km.

Leuvehaven 77

3011 EA Rotterdam

Tel: +31 (0)10 217 5757

E: info@mainporthotel.com



City XL King : € 175
Rate per room all days

Corner/Harbour : € 185
Rate per room all days

Waterfront Sauna : € 195
Rate per room all days

INCLUDES INTERNATIONAL BREAKFAST BUFFET

For further information and to securely confirm your accommodation booking please **click here**

Should you have any queries or would like alternative accommodation options please do not hesitate to contact **Chelsea Tossoun** via e-mail: chelsea.tossoun@informa.com